

SERVING LAUSD ADMINISTRATORS SINCE 1981



UPDATE

ASSOCIATED ADMINISTRATORS OF LOS ANGELES

WEEK OF MAY 27, 2024

FRIENDS OF AALA FUND FIFTY NINE SCHOLARS' DREAMS!

Every week this publication challenges active members to become AALA Angels. Alongside our generous alumni (i.e. retirees), they make college dreams a reality. On May 16th fifty nine scholars were honored with scholarships to further their post-high school education. From attending aviator school to Harvard, from California State University Los Angeles in our back yard to Middlebury College in Vermont, these students embark on a new phase of life courtesy of AALA Angels, AALA alumni, and corporate sponsors. Fourty four students received \$2,500 scholarships and fifteen received \$1,500 scholarships. Friends of AALA also recognized the tremendous support given by community volunteers at local school sites and presented five awards each year.

Beginning this week AALA will highlight scholars by school. You can also view a [slide deck](#) shared at the AALA Awards Banquet on AALA's website!

Friends of AALA is a 501(c)3 with founder and **former AALA President Dr. Judith Perez** shepherding it to reality in 2011. The Board of Friends of AALA meets its annual fundraising goal by seeking donations from AALA's active and alumni members, private foundations, service clubs, organizations and businesses. The generosity of these donors is much appreciated. You may ask yourself, how can a \$5 or \$10 a month payroll deduction make a difference? With a little over 300 monthly donors, AALA Angels generate close to \$2,000 a month or \$24,000 a year; close to ten scholarships! AALA alumni donate over \$30,000 a year or twelve scholarships, and they are on a fixed income!

Here's a challenge from Friends of AALA to all active members! Accept the challenge to surpass AALA alumni donations. Almost all early education administrators are now Angels. Answer the challenge elementary, secondary, school support administrators and Unit J departments! Join their ranks and become AALA Angels. And remember, all donations to FRIENDS OF AALA are tax deductible. Scan this QR code **and earn your wings!**



On this Memorial Day weekend, don't forget to disconnect at end of business on May 24th through beginning of business on May 28th!

ASSOCIATED ADMINISTRATORS OF LOS ANGELES

WEEK OF MAY 27, 2024

IN THIS ISSUE:

- 1 FRIENDS OF AALA FUND FIFTY NINE SCHOLARS' DREAMS!
- 3 CALLING OUT AALA FRONTLINE MANAGERS! SHARE WITH YOUR COMMUNITY!
UNION VISITORS ON SCHOOL CAMPUS
ASSISTANT PRINCIPAL DROP-IN SESSION
- 4 LOOKING FOR ACCURATE INFORMATION? HERE ARE YOUR OFFICIAL AALA SOURCES OF INFORMATION
- 5 AALA MEMBERS SHINE
- 6 SUPPORT AALA-ENDORSED CANDIDATES!
- 8 HEALTHCARE FAQs The Other Half of Well-Being
- 10 INFORMATION CORNER
- 12 2024 AALA SCHOLARS
- 16 HUMAN RESOURCES UPDATES
- 18 POSITIONS AVAILABLE (LINKS)
INTEREST GROUP CONTACT INFORMATION
- 19 DISTRICT ANNOUNCEMENTS

AALA STAFF:

Nery X. Paiz, President

Administrators

Juan A. Flecha, Chief-of-Staff
Dan Isaacs
Steve Quon

Consultants

Irene Hyland
Maria Elena Rico
Dr. Lillian Utsumi

Field Representatives

Doris Dillard
Julie Gonzalez
Dr. Rosa Maria Hernandez
Dr. Windy Warren

Unit J Stewards

Ignacio Chavez
Oliver Hament
Cesar Mercado
Mauricio Pinto
Alfred Sixtos

Office Staff

Javier Melendez
Gema Pivaral
Gloria Souquette

Need to contact us?

Associated Administrators of Los Angeles
1910 Sunset Blvd., Suite 410
Los Angeles, CA 90026
Office 213/484-2226
Fax 213/484-0201
Web www.aala.us
Email office@aala.us
Update (assistance) info@aala.us

ASSISTANT PRINCIPALS:

If you have questions regarding your seniority or rank, or looking for support, contact [Maria Voigt](#).

You can find the February info-session slide deck [HERE](#).

You can find the HR FAQs document [HERE](#).

If your position is not funded next year, HR will contact you directly and provide options. You can also email askhr@lausd.net

Reach out to your [AALA Executive Board representatives](#)

CALLING ALL FRONTLINE MANAGERS! SHARE WITH YOUR SCHOOL COMMUNITY!

Are you tired of the school board dismissing school safety concerns? Call or email the school board! **Demand that they stop micromanaging safety on your campus and focus on funding much needed assistant principals! Ask your school community to do the same!**

- Board President Jackie Goldberg, (213) 241-5555 jackie.goldberg@lausd.net
- Board Vice President Scott Schmerelson, (213) 241-8333 scott.schmerelson@lausd.net
- Board member Tanya Franklin Ortiz, (213) 241-6385 BD7 tanya.franklin@lausd.net
- Board member Kelly Gonez, (213) 241-6388 kelly.gonez@lausd.net
- Board member Dr. George McKenna, (213) 241-6382 george.mckenna@lausd.net
- Board member Nick Melvoin, 213-241-6387 nick.melvoin@lausd.net
- Board member Rocio Rivas, (213) 241-6020 rocio.rivas@lausd.net

UNION VISITORS ON SCHOOL CAMPUS

Administrators as a reminder, Union Representatives may periodically visit school sites and/or district locations unannounced to meet with their members. The District is required to provide reasonable access to district facilities which may also include contacting employees before or after their work day and during their duty-free break and lunch. However, such access should not interrupt the employee's regular work duties during their assigned hours. Representatives are permitted to enter school campuses and/or district locations and should adhere to the LAUSD Visitor's policy.

Union Representatives are to:

- Provide proper identification, inform the administrator or designee of their presence upon their arrival at a work site, and state their intended purpose.
- Conduct themselves in a respectful manner.
- Not disrupt employees during their assigned work time.
- Inform the main office of their departure and return the visitor's permit before leaving the work location.

If you have any questions, please contact your Staff Relations Field Director, Human Resource Representative and/or the Office of Labor Relations.

ASSISTANT PRINCIPAL DROP-IN SESSION

All assistant principals are invited to a drop-in information session that will provide guidance regarding assistant principal staffing for the 2024-2025 school year.

Information Session Dates/Times

Thursday, May 30, 2024 at 4:00

Location

Zoom Link: <https://lausd.zoom.us/j/81285569807>

Assistant Principals who have additional questions may contact **Maria Voigt, Administrator of Certificated Administrative Services.**

ASSOCIATED ADMINISTRATORS OF LOS ANGELES

LOOKING FOR ACCURATE INFORMATION? HERE ARE YOUR OFFICIAL AALA SOURCES OF INFORMATION:

Website: www.aala.us

Weekly Update: <https://aala.us/category/newsletter/>

info@aala.us (Update, not receiving communications, non-private concerns)

office@aala.us (General information, membership questions, member representation support, private concerns)

Office 213/484-2226

EXECUTIVE BOARD

President Nery X. Paiz, npaiz2@lausd.net

Adult Vice President Anna E. Madrid, aem76041@lausd.net

Adult Director Roxanna Kruszewski, rxj59441@lausd.net

Adult Director Julio Melara, jmelar01@lausd.net

Classified (Unit J) Vice President Lisa Marine, lisa.marine@lausd.net

Classified Director Lionel Barreda, lionel.barreda@lausd.net

Classified Director Manny Montenegro, manny.montenegro@lausd.net

Early Education Vice President Dr. Ayanna Davis, ayanna.davis@lausd.net

Early Education Director Scarlett Ramirez Holguin, smr2897@lausd.net

Early Education Director Viken Kazarian, vxk6611@lausd.net

Elementary Vice President Manny Nava, mnav20@lausd.net

Elementary Director Marco Flores, mfloves@lausd.net

Elementary Director Piedad Sanchez, pps8982@lausd.net

Secondary Vice President Blanca Cruz, blanca.cruz@lausd.net

Karen Fattal, Secondary Director, kfattal@lausd.net

Secondary Director Jorge Olmos, jxo4965@lausd.net

School Support Admin. Vice President Titus Campos, tcamp1@lausd.net

School Support Admin. Director Brenda Pensamiento, bpensami@lausd.net

Angela Sandoval, School Support Admin. Director, abs9291@lausd.net

Big Region West shoutout to the teachers, administrators, students and volunteers who worked tirelessly to make Region West's Steam Fest an unforgettable day!



President Paiz and AALA endorsed board candidates **Sherlett Hendy Newbill, Graciela Ortiz, and Scott Schmerelson** sharing Student Safety challenges with Lt Governor **Eleni Kounalakis**



ASSOCIATED ADMINISTRATORS OF LOS ANGELES



SUPPORT AALA-ENDORSED CANDIDATES! YOU CAN VOLUNTEER OR CONTRIBUTE



**Volunteer
Sign Up**



Contribution Link



PAID FOR BY:
GRACIELA ORTIZ FOR SCHOOL BOARD 2024
GENERAL #1468171
ADDITIONAL INFORMATION IS AVAILABLE AT
ETHICS.LACITY.ORG. CREATED AND PRODUCED
ENTIRELY ON AN IN-HOUSE COMPUTER



Meet Scott

No one loves schools more than Scott. The Philadelphia native joined the LAUSD family in 1978, and rose through the ranks as a teacher, counselor and principal at Virgil, Griffith and Lawrence middle schools. He retired after leading Johnnie Cochran Middel School for 10 years. His tenure was highlighted by improved test scores, a revamped physical plan, and higher student, teacher and parent morale.

Colleagues and community members urged him to continue advocating for public education at the next level, the LAUSD School Board.





Who Are We? *We were founded by LAUSD employees in 1939.*

Established in 1939, we are a not-for-profit financial cooperative founded by a group LAUSD and LACCD employees. Our field of membership is exclusively focused on serving our community. This specialization enables us to offer meticulously crafted financial products and services tailored to the membership. Unlike traditional for-profit banks driven by shareholder interests, our foremost objective is your financial well-being, both in savings and earnings.

Current School Employees

- Rate Reduction Auto Loan ¹
(reduce your current or offered rate by 2%!)*
- Summer Safeguard Savings Account ^{2, 3}
(Prepare for the summer and get rewarded)
- Classroom Supply Loan ^{2, 4}
(Borrow up to \$1,000 @ 0% for 12 months)
- Utility Loan for Classified Employees ^{2, 4}
(Borrow up to \$1,000 @ 0% for 12 months)
- Technology Loan ²
(Borrow up to \$2,500 @ 1% for 24 months)
- Mortgage Programs ⁵

And so much more...

- Free Checking
- Free Savings / Holiday Account / U Name It!
- Individual Retirement Accounts
- Debt Consolidation Loan
- Non Variable - Visa Credit Card
- Personal Loan (Special Occassions)
- Credit Builder / Rebuilder Loan Programs
- Auto Buying Services

More Branch & ATM access than most!



Nationwide Branch and ATM Access

- +5,000 Nationwide Branches (Service Centers)
- +30,000 Surcharge Free ATMs

Join Today!



As of 4/1/2024, all applications are subject to approval. Rates are subject to change. The actual terms will vary based on the borrower's or borrowers' characteristics. ¹ Floor rate at 5.65% for 72 months. ² Direct deposit or payroll deduction from a qualified source is required. ³ Maximum monthly contribution of \$2,000. Total deposit will be transferred to Primary Share account on the first business day of July. This is a variable rate account. As of the date of this advertisement, 6.60% APY / 6.44% Rate. ⁴ Must be a current school employee (classified or certificated). ⁵ Visit our Home Loan Center at www.SchoolsFCU.org. + Access provided by COOP. Service restrictions may apply.

Federally insured by the NCUA | Supplementary coverage is provided by ASI.

www.SchoolsFCU.org
(866) 459-2345

HEALTHCARE

FAQS *The Other Half of Well-Being*

Mental health, an essential part of our overall health, involves our emotional, psychological, and social well-being. It affects our feelings, mood, actions, and behaviors. It determines how we carry out everyday activities, make decisions, handle stress, and navigate the social network of family, friends, and community. Mental health encompasses both mental well-being—a state of thriving in one’s life—and mental disorders and illnesses. According to the Centers for Disease Control:

- More than one in five adults suffer from mental illness.
- More than one in five teens (ages 13-18 years) have or have had a debilitating mental illness.
- About one in 25 adults live with a serious mental illness, such as schizophrenia, bipolar disorder, or major depression.

What are some possible causes of mental disorders?

Research suggests there is no single cause of mental disorder or illness, but rather multiple environmental (including lifestyle) and genetic factors that interact to increase or decrease one’s risk for mental illness. Environmental factors that increase risk may include work stress, drug/alcohol abuse, financial distress, grief, prenatal exposure to toxins, and medical conditions, to name a few. Genetic factors may include family history of mental illness such as schizophrenia, bipolar disorder, or depression.

What are the dominant types of mental disorders?

Mental disorders, grouped by common attributes, include anxiety, mood, and schizophrenic disorders.

- **Anxiety disorders** are characterized by excessive worry or fear, resulting in panic, phobias, repetitive actions (obsessive-compulsive disorder), or post-traumatic stress.
- **Mood disorders** include depression and bipolar disorders. Depressive disorders manifest in loss of pleasure in everything, having low energy, trouble sleeping, trouble concentrating, changes in appetite and lack interest. Sufferers of bipolar disorders experience extreme change in their mood, energy, and activity levels that interfere with daily life.

- **Schizophrenic disorders** may involve symptoms such as having trouble processing information, expressing fragmented thoughts, feeling harmed or controlled by others, hallucinating, and moving with abnormal posture and repetitive motions.

What are some observable symptoms that may signal a mental health disorder?

- Withdrawal from friends, family, colleagues; withdrawal from activities
- Having consistently low energy, trouble sleeping, extreme tiredness
- Feeling hopeless, sad, or confused
- Problems with alcohol and drug use
- Displaying negative emotions
- Being unable to complete daily tasks, such as getting to work or cooking a meal
- Feeling excessive anger, showing hostility
- Having delusions or persistent thoughts that reappear regularly
- Hearing voices

If you or someone you know is experiencing signs of a mental disorder, and the symptoms are severe, such as wanting to hurt oneself, contact 911 for immediate help. Otherwise, confer with your primary care physician, request an appointment with a therapist, or provide support to get help.

What treatment options are available through our health plans?

Treatment for mental health disorders usually consists of psychotherapy, medication, or a combination of both. All District medical plans offer both outpatient and inpatient mental health care, as well as substance abuse treatment.

By learning about, and discussing mental health with our family and friends, we can help reduce the stigma faced by those who suffer from a mental disorder. Listed below are resources for learning more about mental disorder and illnesses:

- [My Mental Health? Do I Need Help?](#) National Institute of Mental Health
- [Mental Illness](#), Mayo Clinic
- [Depression: Supporting a family member or friend](#), Mayo Clinic
- [Supporting Others](#), Mental Health America
- [How Do You Help Someone Who is Struggling Emotionally?](#) Karthik Kumar, MBBS, MedicineNet



LAUSD APPROVED HIGH-IMPACT TUTORING PROVIDER



WHO WE ARE

Cignition is a K-12 tutoring program, led by experienced educators who **produce proven, repeatable** results in student success.



Transforming
Virtual
Tutoring

WHAT WE DO

Our research-based approach focuses on data-informed instruction and collaborative learning, encouraging **student-to-student interaction** to build **deep conceptual understanding**.



Giving
Students That
"I get it!"
Moment

WHERE TO FIND US

We're already in classrooms all over Los Angeles Unified School District and we'd love to add you to our ranks!



Helping Educators
Get Students Back
**ON Track and ON
Grade Level**

CONTACT US NOW:



(510) 946-7750 ext. 6



dalcaraz@cignition.com



www.cignition.com

ASSOCIATED ADMINISTRATORS OF LOS ANGELES

HAVE YOU MOVED HOME OR WORK LOCATION?

Please email office@aala.us to keep accurate information and make sure you receive communications.

NEED ASSISTANCE FROM AALA?

Whether you need assistance with membership, have a question or need representation, AALA's staff is available to assist you! The office is open Monday to Friday 7:30 am to 4:00 pm (213/484-2226) or you can email office@aala.us 24/7.

ARE YOU A NEW ADMINISTRATOR OR CANCELED MEMBERSHIP?

Becoming an AALA active member with the benefits of [AALA membership](#) just got easier, Complete AALA's easy form by scanning this QR code. Remember, AALA is as strong as its membership!

I INADVERTENTLY UNSUBSCRIBED FROM THE UPDATE. WHO DO I CONTACT?

Email info@aala.us or office@aala.us for assistance.



We prepare educators through a social justice lens, the knowledge, skills, and dispositions necessary to become successful 21st century school administrators and educational leaders.



Want to Become a PK-12 Administrator?

Accepting Applications

Zoom Info Sessions

(5:00pm)

Apr. 10 May 15 Jun. 11

REGISTER FOR A ZOOM
INFO SESSION:

<https://bit.ly/407Vm6P>

Cohort Model

Classes Held Once a Week
In-Person & Online

Deadline to Apply July 1, 2024



PROGRAM OPTIONS

Preliminary Administrative Services Credential (PASC) program
Completed in 3-semesters (fall-spring-summer)

**M.A. in Educational Administration and
Preliminary Administrative Services Credential (PASC) program**
Completed in 4-semesters (fall-spring-summer-fall)

California State University, Northridge
Department of Educational Leadership and Policy Studies
mariel.noyes@csun.edu Office: (818) 677- 2591

Yael Bernal

UNIVERSITY OF CALIFORNIA,
IRVINE
– ELECTRICAL ENGINEERING

BELL HIGH SCHOOL
PRINCIPAL FELIPE BARRAGAN



2024

Angel Montanez

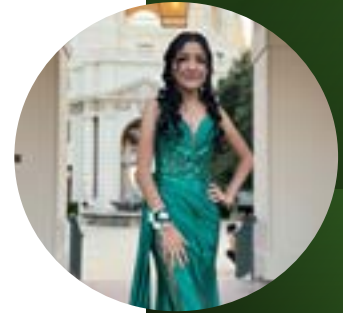
UNIVERSITY OF
CALIFORNIA,
BERKELEY
ARCHITECTURE/
MECHANICAL
ENGINEERING

BELL HIGH SCHOOL
PRINCIPAL FELIPE
BARRAGAN

Chelsea Larios-Medina

UNIVERSITY OF
SOUTHERN
CALIFORNIA
BIOLOGICAL SCIENCES

BELL HIGH SCHOOL
PRINCIPAL FELIPE BARRAGAN



Wendy Gonzalez

CALIFORNIA STATE
UNIVERSITY, DOMINGUEZ
HILLS
– ECOLOGY AND
ENVIRONMENTAL BIOLOGY

BELMONT HIGH SCHOOL
PRINCIPAL ELSA MENDOZA



AALA SCHOLARS!

GOOD LUCK!

Moises Tax-Garcia

CALIFORNIA STATE
UNIVERSITY, LOS
ANGELES
– COMPUTER
ENGINEERING

BELMONT HIGH SCHOOL
PRINCIPAL ELSA MENDOZA



RONY TUM MULUL

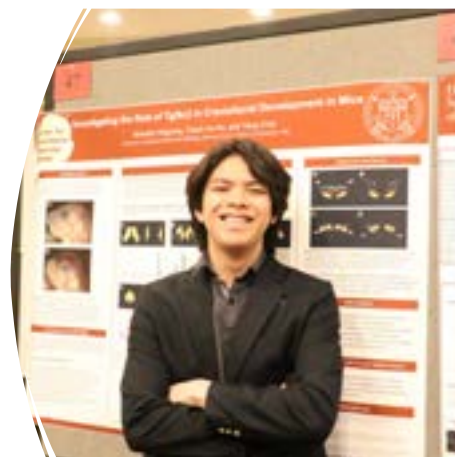
CALIFORNIA STATE UNIVERSITY,
DOMINGUEZ HILLS
– BIOLOGY

BELMONT HIGH SCHOOL
PRINCIPAL ELSA MENDOZA

BRANDON DEGOMA

SANTA MONICA
COLLEGE
– NURSING

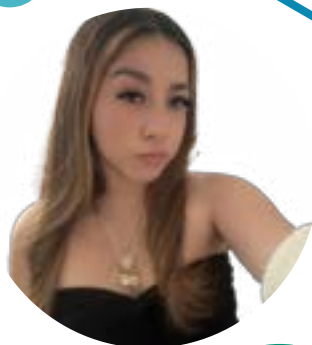
BRAVO MEDICAL MAGNET
PRINCIPAL LUIS LOPEZ



MELANIE RAMOS

CALIFORNIA STATE
UNIVERSITY, LONG
BEACH
– NURSING

CARSON ACADEMY OF
EDUCATION AND EMPOWERMENT
PRINCIPAL SONIA BUENROSTRO



AALA SCHOLARS!

*"Honored to be recognized as one of Associated Administrators of Los Angeles (AALA) Scholarship Recipients. Special thanks to my parents for always supporting me and my **Principal, Aracely Martinez** and Ms. Maria Garcia for attending the scholarship banquet and always supporting me also. Thank you again to all the donors for supporting all the scholars and committee for choosing me as one of the recipient! Thank you AALA with the lead of **Mr. Nery Paiz** and **Mr. Juan Flecha**."*
-Ares Ordanez



ARES ORDANEZ

CALIFORNIA
STATE
UNIVERSITY,
LONG BEACH
– PSYCHOLOGY

CARSON ACADEMY OF
MEDICAL ARTS
PRINCIPAL ARACELI
MARTINEZ

GABRIELA NINO-HERRERA

CALIFORNIA STATE
UNIVERSITY, LONG BEACH
– ENGINEERING

CHAVEZ LEARNING ACADEMIES
ARTES MAGNET

PRINCIPAL ANNE MASCHLER

ABRYL CERVANTES

CALIFORNIA STATE
UNIVERSITY,
NORTHRIDGE
– BIOLOGY

CITY OF ANGELS
INDEPENDENT STUDIES

PRINCIPAL VINCE CARBINO



AUDREY SIENG

BROWN UNIVERSITY
– BIOMEDICAL
ENGINEERING

CLEVELAND HIGH SCHOOL

PRINCIPAL CINDY DUONG

2024

AAALA SCHOLARS!



MARLYN CASTILLO

EAST LOS ANGELES
COLLEGE
CHEMISTRY

DIEGO RIVERA LEARNING
CENTER, PUBLIC SERVICE
COMMUNITY

PRINCIPAL DENNIS FULGONI

**NATALY RUIZ
CANELA**

UNIVERSITY OF
CALIFORNIA, IRVINE
– CRIMINOLOGY, LAW AND
SOCETY

DIEGO RIVERA LEARNING CENTER,
PUBLIC SERVICE COMMUNITY



**YOU ARE OUR
FUTURE!**

DREAM BIG!



ALEJANDRA VALENCIA

UNIVERSITY OF CALIFORNIA,
DAVIS
– ANIMAL SCIENCE

DIEGO RIVERA LEARNING CENTER,
PUBLIC SERVICE COMMUNITY

PRINCIPAL DENNIS FULGONI

Build Stronger Classrooms, Inspire Diverse Young Minds

Convenient Online¹ Programs in Education

Over 85 GCU alumni have been recognized in the field of education, with some receiving Superintendent, Administrator or Teacher of the Year awards as of May 2023.

UNDERGRADUATE

Bachelor of Arts in:

- English for Secondary Education (1)²
- History for Secondary Education (1)²

Bachelor of Science in:

- Early Childhood Education (1)²
- Early Childhood Education and Early Childhood Special Education (1)²
- Educational Studies (2)²
- Elementary Education (1)²
- Elementary Education and Special Education (1)²
- Elementary Education with an Emphasis in Christian Education (1)²
- Elementary Education with an Emphasis in English as a Second Language (1)²
- Elementary Education with an Emphasis in STEM (1)²
- Elementary Education with an Emphasis in Teaching Reading (1)²
- Mathematics for Secondary Education (1)²

GRADUATE

Master of Arts in:

- Autism Spectrum Disorders (3)²
- Communication with an Emphasis in Education (3)²
- Curriculum and Instruction (3)²
- English with an Emphasis in Education (3)²
- Higher Education Student Affairs
- History with an Emphasis in Education (3)²
- Reading with an Emphasis in Elementary Education (3)²
- Reading with an Emphasis in Secondary Education (3)²
- Teaching English to Speakers of Other Languages (TESOL) (3)²

Master of Education in:

- Early Childhood Education (1) (2)²
- Early Childhood Education and Early Childhood Special Education (1) (2)²
- Educational Administration (4)^{2,3}
- Educational Leadership (3)²
- Elementary Education (1) (2)²
- Elementary Education and Special Education (1) (2)²
- School Counseling (1)²
- Secondary Education with an Emphasis in Humanities (1) (2)²
- Secondary Education with an Emphasis in STEM (1) (2)²
- Special Education (1) (2)²
- Special Education: Moderate to Severe (1) (2)²

Master of Science in:

- Biology with an Emphasis in Education (3)²
- Chemistry with an Emphasis in Education (3)²
- Instructional Design
- Instructional Technology (3)²
- Sociology with an Emphasis in Education

Graduate Certificate of Completion in:

- Canyon L.E.A.P. to Teach, Elementary Education (1)²
- Canyon L.E.A.P. to Teach, Secondary Education (1)²
- Communication
- Distance Learning
- English
- History
- Instructional Coaching
- Sociology
- Special Education, Mild to Moderate
- Special Education, Moderate to Severe
- Teaching English to Speakers of Other Languages (TESOL)



**GRAND CANYON
UNIVERSITY**

FIND YOUR PURPOSE

Receive a minimum of
\$3,340 off (up to \$5,950 off)⁴
GCU's Master of Education programs

FOR MORE INFORMATION, CONTACT:

Sandra Taylor
602-247-4523
Sandra.Taylor@gcu.edu

If seeking licensure or certification, applicants to the program are responsible for contacting their state department of education for licensure requirements and program approval. In addition, fingerprint/background clearance is required.

¹Excluding observational and practice-based experiences and student teaching.

²These degrees are designed to provide adequate subject content coupled with teacher preparation from the College of Education. (1) Initial Program—Leads to Initial Teacher Licensure. (2) Initial Program—Does Not Lead to Teacher Licensure. This program does not include a student teaching component, and does not therefore lead to licensure, but may lead to career advancement for those already licensed as teachers. (3) Advanced Program for Continuing Professional Education. (4) Initial Program leads to Principal Licensure. Applicants to the program are responsible for contacting their state department of education for licensure requirements and program approval. Arizona or home state fingerprint/background clearance is required for all practicum/field experiences and student teaching.

³The Master of Education in Educational Administration, offered by the College of Education, is an institutionally accredited program approved by the State of Arizona. It aligns with the Professional Standards for Educational Leaders (PSEL, 2015) led by the National Policy Board for Educational Administration (NPBEA, 2018).

⁴MOU 9120 & 9121: This scholarship is only valid for those applicants who are participating in a GCU College of Education or Secondary Education Emphasis master's degree program, offered online, and who submit a completed application to start their program on or before December 31, 2024. If you enroll in a master's degree program through any of the College of Education or Secondary Education Emphasis degree programs offered online, Grand Canyon University will offer you 18% off the tuition per course for your program. This scholarship will be applied at the same time the tuition charges occur. This scholarship cannot be used in conjunction with any other GCU scholarships/awards. This scholarship will be applied toward your tuition only and does not include fees (i.e., Canyon Connect, Technology, etc.).

Grand Canyon University is accredited by the Higher Learning Commission (HLCCommission.org), an institutional accreditation agency recognized by the U.S. Department of Education. Please note, not all GCU programs are available in all states and in all learning modalities. Program availability is contingent on student enrollment. Important policy information is available in the University Policy Handbook at gcu.edu/academics/academic-policies.php. The information printed in this material is accurate as of DECEMBER 2023. For the most up-to-date information and admission requirements, tuition, scholarships and more, visit gcu.edu. Approved by the Assistant Dean of the College of Education on Dec. 26, 2023. ©2023 Grand Canyon University 23COEED244



UPDATES

EDUCATOR DEVELOPMENT AND SUPPORT (EDS)

EDST Observer Certification Training

We are offering a **two-day** certification training in 2024 for administrators who are evaluating teachers, non-classroom teachers, and counselors. Two more trainings are available this Spring Semester: **April 11-12** and **June 13-14**. To enroll, log onto MyPLN and type in the key words **Observer Certification** or [click this link](#).

Zoom Office Hours

The Educator Development and Support (EDS) staff is available to assist you with all phases of the evaluation cycle during virtual **Office Hours** on Fridays, from 2:00 pm to 4:00 pm, using this Zoom link: <https://lausd.zoom.us/j/87482513835>.

Administrator Evaluation Due Dates

END-OF-YEAR CONFERENCE & Final Evaluation	School Support Administrators	
	B Basis	05/13/2024
	E Basis	05/22/2024
	A Basis	05/24/2024
	Assistant Principals	05/14/2024
	Principals	05/21/2024
	Principal Supervisors	05/28/2024

Assistant Principal Drop-In Session

All assistant principals are invited to a drop-in information session that will provide guidance regarding assistant principal staffing for the 2024-2025 school year.

Information Session Dates/ Times	Location
Thursday, May 30, 2024 at 4:00	Zoom Link: https://lausd.zoom.us/j/81285569807

Assistant Principals who have additional questions may contact **Maria Voigt, Administrator of Certificated Administrative Services**.



Have you thought about **Long-Term Care?**

Long-Term Care isn't just for the elderly. Accidents, injuries, and illnesses can happen to anyone, at any age, so it is very important to be prepared. Many people believe, incorrectly, that Medicare or their Health Insurance will cover most or all of the costs of long-term care services. However, nothing could be further from the truth. In fact, Medicare typically covers only about 12% of the cost of long-term care services nationally. Standard healthcare insurance plans for those under 65 are simply not designed to provide long-term services on an extended basis. Without a Long-Term Care Insurance plan in place, you could be stuck paying out-of-pocket for expenses that can exceed \$75,000 per year- or more depending on the area in which you live.

The good news is that you can protect yourself with a Long-Term Care Insurance plan now available to the **ASSOCIATED ADMINISTRATORS of LOS ANGELES (AALA)** members through **SPECIALISTS IN LONG TERM CARE INSURANCE SERVICES, INC, (AN AMBA Company (in CA dba: Association Member Benefits & Insurance Agency))**. These policies can provide benefits to help you pay for your long-term care expenses and protect your assets. They also allow for the choice to receive care in your home, an assisted living facility, or a nursing home. In addition to choosing how you receive care, you can also customize the amounts of your coverage, creating a plan that perfectly suits you and your budget, giving you peace of mind. Furthermore, AALA members are eligible for a group discount on the policy of their choice.

If you are interested in learning more about the plans available to AALA members, please call **TOLL FREE 1-800-764-6585** or send an email inquiry to info@siltc.com containing your name, association, and telephone number. **Please note that a telephone call is necessary to ask several qualifying questions before a customized quote can be mailed to you.**

ASSOCIATED ADMINISTRATORS OF LOS ANGELES



Note to Applicants: Please be advised that you are responsible for making sure all the District requirements have been met. Do not contact AALA for information regarding positions; for detailed requirements for positions and employment updates use the contact phone number provided in the announcement or visit the District website at <http://www.lausdjobs.org> (classified) or <http://achieve.lausd.net/Page/1566> (certificated). Employees who change basis during the school year may not earn a full year of service credit and annualized employees who change their basis during the year may sustain an annualized settlement.

CERTIFICATED positions are open to certificated and classified employees who meet the position requirements.

Click [HERE](#) for school based positions

Click [HERE](#) for non-school based positions

CLASSIFIED positions are open to certificated and classified employees who meet the position requirements.

Click [HERE](#) for current job opportunities.

INTEREST GROUP CONTACT INFORMATION

You seek AAPA information?

<https://bit.ly/LAUDS-AAPA>

Looking for ACSA Region 16 news? Visit ACSA's Region 16 website for up-to-date information at <https://www.acsaregion16.com>

Looking to connect with AJE-LAUDS?

<https://www.ajelausd.org>

Can't find CMAA?

<https://www.instagram.com/cmaa.lausd/>

You seek COBA information?

<https://www.cobalausd.net>



DISTRICT ANNOUNCEMENTS

REGISTER NOW!

LAUSD JOB FAIRS

Four Dates – Four Locations

TO REGISTER: Click on the Date/Event You Wish to Attend and Register or go to the link!

JUNE
13, 14, 17 & 18
10 am – 2 pm

June 13, 2024 (South LA/Harbor Area)
Harbor Occupational Center
Register: <https://tinyurl.com/4bbw8xbu>

June 14, 2024 (S.F. Valley)
West Valley Occupational Center
Register: <https://tinyurl.com/2fm4yx9p>

June 17, 2024 (West LA Area)
Venice Skills Center
Register: <https://tinyurl.com/5xebv4tv>

June 18, 2024 (East LA Area)
East LA Occupational Center
Register: <https://tinyurl.com/bdzhvyay>

Learn About Careers in These Fields

- Before and After School Programs
- Clerical/Administrative
- Early Education and Special Education
- Food Services
- Library Services
- Information Technology
- Instructional Assistance
- Maintenance Services
- School Safety
- Student Transportation

WE ARE HIRING
Join Our Team

- ✓ Great Salaries
- ✓ Excellent Benefits
- ✓ Jobs in Your Community
- ✓ Career Advancement

APPLY NOW

Sponsored by: LAUSD's Personnel Commission and the Division of Adult and Career Education

RETAINING MALE TEACHERS OF COLOR: WHY IT MATTERS & WAYS TO DO IT

AN ADMINISTRATOR PROFESSIONAL DEVELOPMENT



LOS ANGELES MALE TEACHERS OF COLOR NETWORK (LAMTCN)

SPRING 2024

Human Resources invites administrators to engage in professional learning around creating systemic change for increasing retention of male teachers of color (MToC) at school sites. Join us to gain tools and resources designed to help retain MToC.

All administrators who attend will be compensated at the rate of \$50 per hour.

For additional information, contact Mark Duncan at mark.duncan@lausd.net.

SATURDAY, JUNE 1, 2024
9 AM – 12 PM VIA ZOOM



JOIN US!
REGISTRATION: **MyPLN**
KEYWORD: **LAMTCN**

